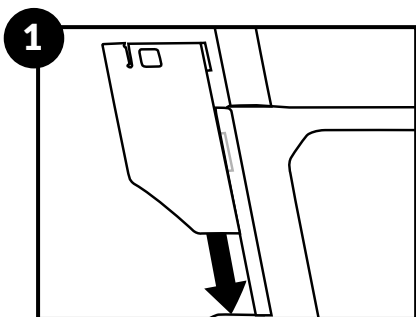
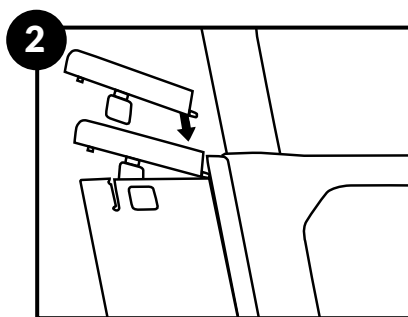


QBOX INSTALLATION INSTRUCTIONS

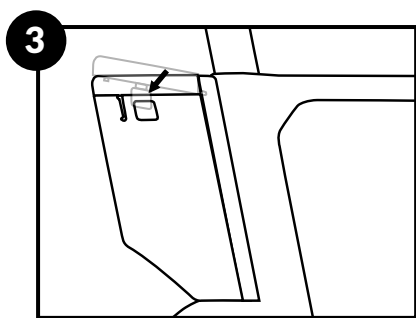
Your QBox storage system was made to carry your out-of-the-saddle essentials during a race or training ride and enhancing aerodynamics.



Insert the box, without the lid, into the molded slider track on the back of your seat tube. Slide the box to the very bottom of the slider.



Insert the lid tab into the molded slider by angling the lid down into the lid tab hollow located just above the box.



After the lid tab is inserted, gently squeeze both black side-tabs together allowing for the tabs to be inserted into the box. When the lid is secured the black side-tabs will expand into place.

QR TIP:

This QBox system features a lid tension adjustment. This allows normal wear and tear noises to be easily removed. Follow the steps provided to prevent a "loose lid" noise.

A. Remove the QBox. Using a 3mm allen wrench lightly untighten the slider retention bolts, allowing the slider to be moved on the frame with a light amount of pressure.

B. Install the box with the lid and move just the slider upward on the back of the seat tube. This will tighten the fit of the three components.

C. Without moving the slider, carefully remove the lid and box. Once removed tighten the slider retention bolts appropriately to 2-3Nm.